

APPLICATION AREAS

All Swiss Color pigments can be mixed with each other. This creates an impressive color spectrum that offers limitless possibilities for all common PMU applications.

	LIP	AREOLA	SKIN	BROW	SCALP	EYELINER	MIX ONLY
101							•
102							•
103							•
104	•						•
105							•
106							•
107	•	•					
108	•	•		•			
109						•	
404	•						
401	•						
402	•						
403	•	•					
406	•	•					
405	•	•					
701	•						
702	•	•					
703	•	•					
704	•	•	•				
705	•	•	•				
706	•	•	•				
407	•	•					
408	•	•	•				
707			•				
708			•				
709		•	•				
201		•	•	•			
203		•	•	•			
204		•	•	•	•		
205		•	•	•	•		
202		•	•	•			
710				•	•		
206		•		•	•		
207				•	•		
301						•	
302						•	
303						•	

HELPS & SKIN CARE PRODUCTS

Get the best out of your pigments with the helps and adjust consistency and texture to your needs. With our skin care products, you guarantee the careful hygiene and care of every PMU treatment.



HELPS

901 PIGMENT SOLUTION
Dilutes pigments to create different consistencies for shading and similar trend techniques.

902 PIGMENT PERFORMER
For a firmer, creamy consistency of the pigments, especially for microblading, but also Permanent make up treatments.

903 PIGMENT VITALIZER
Gives extra smoothness and shine to the pigmentation. The treated area becomes softer and feels more comfortable.

904 PIGMENT SEALER
For sealing newly pigmented PMU. Prevents the penetration by bacteria and reduces the formation of crusts and scabs.

SKIN CARE PRODUCTS

SC PURESKIN
Facial cleanser with coconut extracts to dissolve pigment residues from PMU treatments. Also for daily cleansing. Gentle and regenerating.

SC MEDSKIN
Hygiene spray with the body's own, highly effective active ingredients. Before, after and during each treatment. pH-neutral and alcohol-free.

AFTERCARE CREAM GRAZIA
For the care of lip or brow pigmentation. Preserves suppleness during the regeneration phase. Available as cabinware (250 ml) and homecare product (5 ml).

SC NATUREBALM & SC LIPBALM
For sealing newly pigmented Permanent make up. Prevents the penetration by bacteria and reduces the formation of crusts and scabs.

GENERAL INFORMATION

SWISS COLOR QUALITY

Swiss Color pigments comply with the Ordinance of the FDHA on articles for mucous membrane, skin and hair contact (Ordinance on Articles for Human Contact, HKV, SR 817.023.41). Status: version 1 May 2017 and the ResAP(2008)1.

As well as the Commission Regulation (EU) 2020/2081 amending Annex XVII of Regulation (EC) No. 1907/2006 of the European Parliament and of the Council on the Registration, Evaluation, Authorization and Restriction of Chemicals (REACH) concerning substances in Tattoo or Permanent make up inks, which was published on December 14, 2020 in the Official Journal of the European Union.

In general, the regulation is the sum of all Resolutions and the seven tattooing products Regulations implemented from them, as well as the parts of the Cosmetics Regulation, the Classification, Labeling and Packaging (CLP) Regulation of substances and mixtures and REACH.



Vegan

Cruelty-free

Free from heavy metals

Mixable

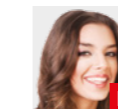
SKIN TYPE ACCORDING TO THOMAS FITZPATRICK



very bright, pale white



light, blonde



light brown, light to olive



olive, medium brown



brown, dark brown



black, very dark brown

SC Cosmetics Handels GmbH
Baumgarten 206
A-6320 Angerberg
T +43 5332 56671
info@swiss-color.com
WWW.SWISS-COLOR.COM

SC-International AG
Neugasse 26
CH-9000 St. Gallen
T +41 71 663 77 77
info@swiss-color.ch
WWW.SWISS-COLOR.CH



SWISS COLOR
PIGMENTS

BASE PIGMENTS

Discover the origins of all Swiss Color Pigments! Create your individual PMU colors with these pure pigments or adapt existing colors according to your ideas. Deepen your know-how in our online color mixing course.

	101 WHITE	For powdery and matte color blends. Do not use pure for PMU applications.	
	102 YELLOW	For the correction of violet and eggplant-colored lips and eyebrows. Use pure only as a corrective color.	
	103 ORANGE	For warming up shades of brown and for correcting PMU pigmentation with a blue tint. Use pure only as a correction color.	
	104 RED	For bright, intense red lip color blends. Also pure a very beautiful lip tone.	
	105 DARK MAGENTA	For darker and cooler color blends. Dose carefully. Do not use pure.	
	NEW 106 GOLD	Mixing color for naturally blonde eyebrows! Dose carefully when lightening brown tones.	
	NEW 107 TERRA	Terracotta-colored pigment for long-lasting results and natural, warm shades.	
	NEW 108 AMARONE	A chestnut brown with a hint of mahogany - ideal for mixing striking colors for lips, brows and areola.	
	NEW 109 BLACK	Black elegance for versatile applications! Ideal as an eyeliner and as a mixing color for long-lasting, intense eyebrows.	

PIGMENTS

Get an even faster overview of the composition and application possibilities of all Swiss Color pigments with our new color card.

	404 POPPY RED	Fresh, dominant red tone. Also suitable for balancing cool lip colors.	
	401 SOFT CORAL	Elegant shade with rosy yellow undertone for natural lips.	
	402 DUSTY ROSE	Powdery pink color with a cool undertone for a natural nude look.	
	403 PASSION BERRY	Medium pink shade for expressive lips. Suitable for all natural lip types.	
	406 RUBY RED	Vivid red for classic, expressive and elegant lip results.	
	405 SWEET PLUM	Darkened brown-red with a magenta undertone for rich, intense lips.	
	701 WILD ROSE	For a fresh, elegant lip color with an undertone of cool pink.	
	702 PASSION ROSE	Rose shade with fresh, yellowish undertone. Ideal for lip and areola pigmentation pure or as a mixing color.	
	703 ARIZONA RED	Fine dark lip shade with harmonious color saturation. For rosy color results on lips and areola.	
	704 LIGHT UMBRA	Powdery pink-yellowish undertone for lip and areola. Great blending color for camouflage pigmentation on pink skin types.	
	705 DARK UMBRA	Powdery old pink shade, pure for areola or as a mixed color for lip, scar and skin pigmentation.	

The color samples reflect the pure brilliance and consistency of Swiss Color pigments. The actual effect of the color is determined by the respective skin type.

	706 SOFT SIENNA	Velvety warm undertones of peach and brown. Pure or as a blended color for lips and areola.	
	407 SOFT TERRA	Powdery, warm, cinnamon-colored lip pigment with yellow undertones.	
	408 MAROON RED	Earthy, harmonious shade based on yellow, with red-brown undertone.	
	707 LIGHT BEIGE	Fine skin tone for corrections, scars and lip light.	
	708 MEDIUM BEIGE	Skin color for light to medium skin types. Pure or for mixing, mainly for camouflage.	
	709 DARK BEIGE	Dark skin tone with a slight honey note. Blending color for camouflage and areola pigmentation.	
	201 HONEY BROWN	A warm golden brown shade with honey-yellowish undertones. Universally applicable as a mixing color.	
	203 CHOCOLATE BROWN	Subtle medium brown shade with sunny-warm undertone and low, ashy components.	
	204 HAZEL BROWN	Elegant hazelnut-brown shade with ash blond undertone. Use pure for a beautiful, warm medium brown.	
	205 DARK BROWN	Classic dark brown shade, which is also used as a mixing color to darken lighter browns.	
	202 OLIVE BROWN	Mixing color for areola, brow and skin pigmentation and for the correction of red brow pigmentation.	

Visit us online via the QR code on the right and filter our color palette there according to your individual criteria and needs.



	710 TENDER BROWN	Powdery medium brown shade. Also pure very harmonious and natural.	
	206 COCOA BROWN	Ashy brown shade with cool undertone. Gives a rich, natural result when used pure.	
	207 EBONY BROWN	Intense, slightly olive dark brown shade. Almost black-brown, with a cool undertone.	
	301 ULTRA-BLACK	Deep, expressive black with creamy consistency. Base eyeliner for any skin type.	
	302 JETBLACK	Intense black with liquid consistency. Only suitable for firm skin texture.	
	303 STARDUST	Velvety black pigment, exclusively for eyeliner shading.	

LEGEND

Representative components of color perception. The composition does not depict a mixing ratio!
 light, medium, strong coverage
 organic / blend (mix) / inorganic
 warm / neutral / cool
 Lip, Brow, mix only, Areola, Scalp, Skin, Eyeliner, Iron oxide
 Skin type recommendation according to Fitzpatrick. Example: Skin type 1 to 4.
 Overview of all skin types on the reverse side.